



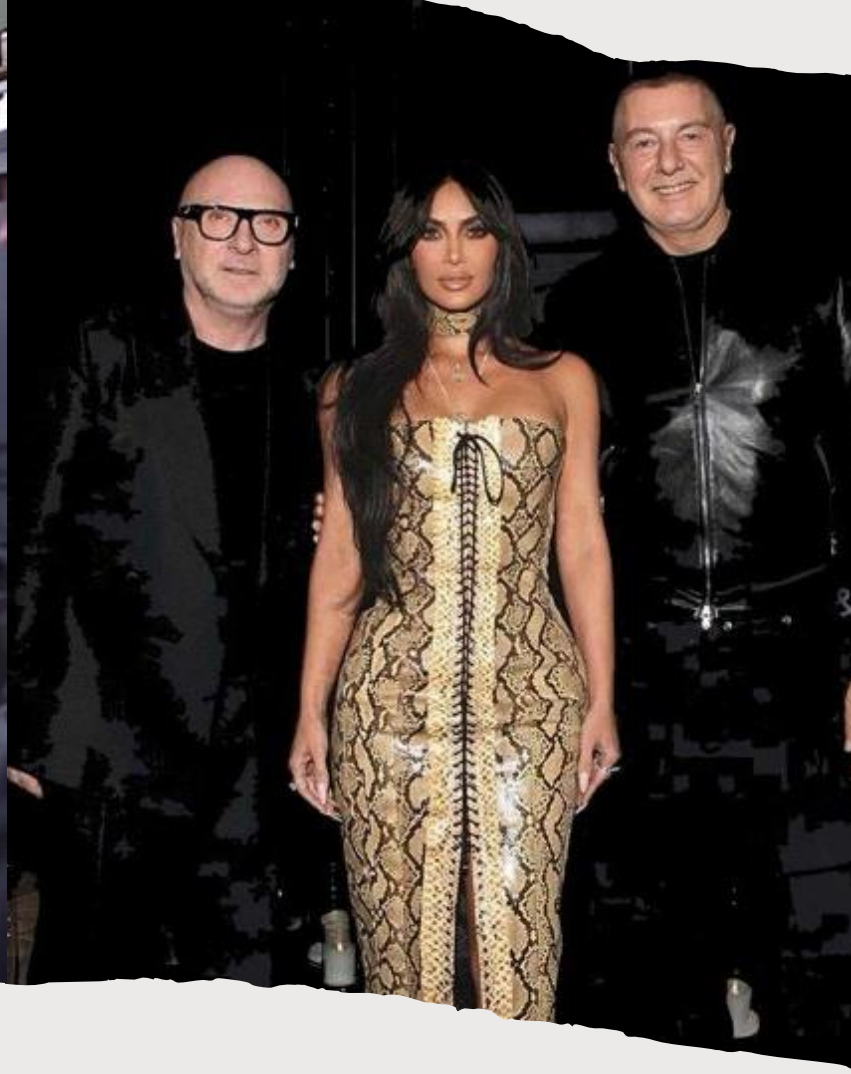
NEWCASTLE
AND STAFFORD
COLLEGES GROUP

Developing AI Literacy

Preparing Staff & Learners

Adam Leeson





Real or Fake?

AI at NSCG

- What is AI literacy?
- Why is it important for Staff and Learners?
- How can we empower the workforce of the future?



The Gap

- 69% find it challenging to hire those with digital the skills.
- 1 in 10 workers have in demand AI skills
- 76% of businesses are affected by lack of digital skills
- 40% of IBM workforce need reskilling (1.4 billion)

Key Business Skills

- Problem-Solving
- Communication
- Soft Skills
- Critical Thinking
- People Skills

IDC, 2024



Key AI Skills

- Prompting
- Analytical Judgement
- AI Delegation
- Bias Detection and Handling

Microsoft, 2024



A photograph of a classroom with several hands raised in the air. The background is a chalkboard filled with faint, illegible chalk markings. The hands are of various skin tones and are positioned at different heights, suggesting an active learning environment. The text "How do we educate learners?" is overlaid in white, centered on the image.

How do we educate
learners?



AI Literacy

What does AI Literacy look like?

Staff AI Literacy

- Integration into workflows
- Collaboration
- Continuous learning
- Ethical decision making
- Safeguarding
- AI practical skills

Unesco, 2022



Policy

Name _____

Signature _____

Date _____



Staff Training

Must data sets, to enable problem-solving and decision-making
and deep learning.

ing the use of algorithms and machine learning techniques to generate
video, that closely resembles human-created content. It is training on
produce new outputs based on patterns and information they have

igned to assist and augment human creativity and productivity, it is
not and critical judgement are still crucial in evaluating and refining the



- Practical Workshops
- Sharing Good Practice
- Dedicated Website
- Feedback

What can Teachers use it for?

There are numerous ways generative AI can enhance efficiency and innovation within teaching and learning. However, it's important to remember that AI complements and does not replace, the expertise and unique human connections that teachers bring to the classroom.

Here are some practical ways in which teachers can use AI:

- **Resource Creation:** Create larger quantities of high-quality resources, such as worksheets, handouts, and study materials and adapt materials for diverse learning needs, including High needs and ESOL/EAL.
- **Lesson Planning and Creativity:** Generate creative lesson ideas, project themes, and activity suggestions. You can also get inspiration for cross-curricular links and real-world applications.
- **Writing Support:** Review and refine your **own** writing (not learners), receiving suggestions for clearer communication and tone adjustments.
- **Simplifying Complex Topics:** Summarise dense or technical content into student-friendly explanations. Create analogies or visual prompts to aid understanding



AI Literacy

What does AI Literacy look like
for learners?



AI Literacy for Learners



Constructive use of AI



Critical Thinking and Problem Solving



Limitations and Benefits



Creative and Innovative Solutions



Ethics and dangers



Types of AI

User Agreements

Which of the following do not allow U18's to use?

- Gemini
- Midjourney
- Grammarly
- Microsoft
- Quillbot
- OpenAI (GPT)



English Lesson Example

Creative writing task

- Engagement
- Critical thinking
- Prompt engineering
- Sticky learning





English Example - Prompts

1. create an image of a lone thatch hut lit from within with an amber glow lighting the connecting bridge that stretches through the trees above the cobalt lake
2. create an image of a long pathway which leads to a small straw-roofed house overlooking the jungle with a still unmoved lake separating it from the jungle
3. create an image of the old thatched roof that sat on the dark lake in the blue moonlight. The orange glow illuminates the red wooden door and casts shadows on the walls of the cabin making the brudge glisten due to the damp caused by the rain earlier in the day



Evolving AI 
@evolving.ai

Which of these videos is AI?



56.4K




1,352



1,413



evolving.ai 

 IN FLAME shometye •

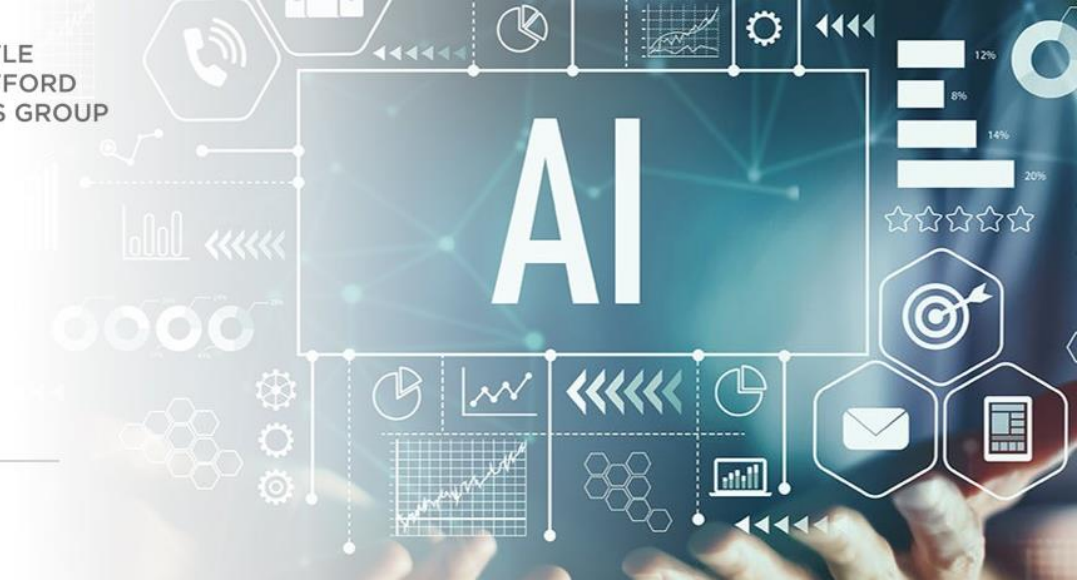
🔊 Can you guess which of these videos is AI and ...



Learner Induction

Using AI at NSCG

Tutor Name _____



NSCG Classroom Agreement on



Using Generative AI Tools

To ensure everyone uses generative AI tools safely and responsibly, we should agree to create a positive learning environment by following these rules.

I, _____, agree to:

- 1. Use generative AI tools responsibly.** I understand that generative AI tools can be very useful, but they also come with risks and limitations. I agree to use such tools in a responsible and ethical manner, and know there are consequences to my usage. I also acknowledge that the majority of tools have their own policies and age restrictions, requiring parent/guardian permission and will seek this before use.
- 2. Understand AI's limitations.** I recognise generative AI tools have limitations and risks, and may not always produce accurate results.
- 3. Be safe and secure.** I will safeguard my online safety and privacy by avoiding sharing personal information with AI tools, not clicking or downloading from suspicious links, and keeping my devices updated and secure.
- 4. Always fact-check my information.** I will critically evaluate and verify AI-generated outputs with trusted sources before accepting it as true.
- 5. Prioritise personal wellbeing.** I recognise that generative AI tools and LLMs (Large Language Models) are not human, and I pledge not to form dependent relationships or friendships with them. I will safeguard my wellbeing by being mindful of my usage, and ensuring a healthy balance with physical interactions with friends and family.

- What is AI?
- Benefits and limitations
- Ethics
- Skills
- Class agreement

Learner Views on AI



67% Not confident
in using AI for Jobs



56% Not confident
about ethical issues



19% would use for
answering questions



58% Not confident
using AI

Skill Development

Creativity

Evaluation

Critical
Thinking

Innovative
Solutions

Next Steps

- Wider Learning Tutorials and Employability
- Development of Skills
- Learners using AI in a safe environment (once terms and consent are updated)





Real or Fake?